



**DEPOSITOS
VILLARROBLEDO, S.L.**

*Experience and professionalism at the service of our clients since 2004,
carrying out works of the highest level in metal.*

THE COMPANY

Depósitos Villarrobledo, S.L. is a boilermaking and metallurgy company located in the city of Villarrobledo, in the heart of Castilla La Mancha.



Equipped with the **most modern manufacturing and development technologies** in an environment of **more than 6,000 square meters**, the company offers its products and services nationally and internationally.

In continuous expansion, the company maintains important contacts with suppliers and customers from different countries.

The company is specialized in various sectors such as the **manufacture of pressure vessels, tank and cistern bottoms, road signs, fiber laser and plasma cutting, and numerical control folding.**

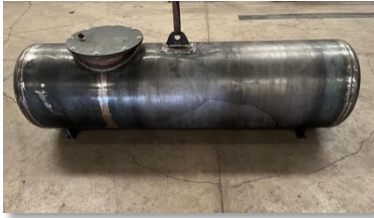


Experience and professionalism at the service of our clients since 2004, carrying out work of the highest level in metal.

PRESSURE TANKS

In our company, we manufacture pressure vessels **following the most demanding engineering standards**. We comply with all applicable regulations regarding design, quality and safety.

Our pressure vessel manufacturing technicians are certified and **have extensive experience**. They form a multidisciplinary team that tries to cover all stages, from the initial idea to the final delivery to the client.



COMPRESSED AIR BOILERS

We manufacture, design and install all types of carbon and stainless steel compressed air boilers for installations of all sizes.



TANK AND CISTERNS FUNDS

In Depósitos Villarrobledo, S.L. **We manufacture custom funds in stainless steel, carbon and aluminum**, adapting to the needs of our clients whatever their sector.

In our production hall **we have the necessary technological and human resources** to manufacture bottoms both small and up to 6,000 mm. diameter. We also offer the possibility of applying a **polished finish as well as internal and external beveling** to all our products.

We work with different types of funds: flat, campsa, klopper, korbögen, elliptical, conical.



WATER AND SLURRY TANKS

We manufacture carbon and stainless steel water and slurry tanks, fully customized and adapted to the client.



MULTILIFT HITCH AND TRAILER TANKS

We manufacture customised tanks for multilift couplings and trailers, both in carbon and stainless steel.

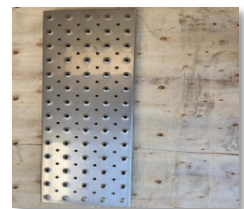
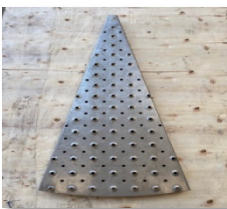


SUCTION AND PRESSURE TANKS

We manufacture suction and pressure tanks based on customer needs. Custom carbon and stainless steel design.



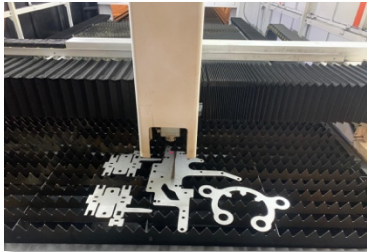
PERFORATED HAPAS (GRIP AND NON-SLIP)



We are specialists in the manufacture of high quality perforated grip and non-slip sheets.

FIBER LASER

The fiber laser has already become **an essential in the cutting sector**. It is a type of solid-state laser used by machining companies that are pioneers in **high-precision, fast, environmentally friendly and energy-saving metal cutting**. We are specialists in fiber laser cutting on a 4000X2000 TABLE.

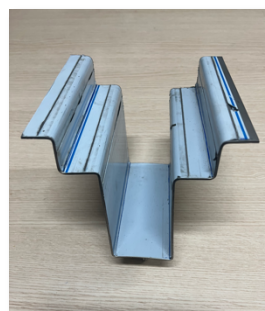


THERMAL DYNAMICS HIGH DEFINITION PLASMA

Always betting on new technologies, in our company **we have numerical control plasma cutting equipment for precision work** on various materials such as **carbon steel, stainless steel, aluminum and galvanized steel**. We have a work table of 14500 x 3500 mm. with beveling head.



NUMERICALLY CONTROLLED BENDING



CNC bending is a technique that allows us to bend metal sheets with precision and with the reduction of possible errors, since our technologies allow us to visualize, before the product is produced, the final result thanks to the use of 3D CAD.

In Depósitos Villarrobledo, S.L. we carry out a process that offers **the most efficient and fastest solution to obtain the most appropriate folding** according to the client's needs.

ROAD SIGNS

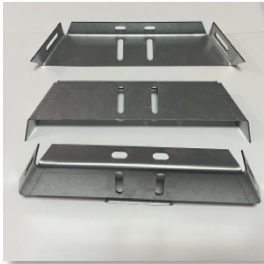
We are specialized in the **manufacture and modeling of all types of traffic signs** for vertical signaling and we currently have advanced equipment and technology to develop this process **on various materials such as galvanized steel, stainless steel and aluminum.**

We also offer a **line of cheaper signals** to cover the needs and characteristics of each client.



KILOMETRIC MILESTONE AND SIGNALING ACCESORIES

Manufacture of **kilometer markers, clamps and all kinds of road marking accessories.**



HIGHLY QUALIFIED STAFF



The company has a team of **highly qualified professionals** who form a multidisciplinary team that covers all manufacturing stages, from the initial idea to the final delivery of the product to the customer.

CLAMPS

Manufacture of **AISI-304 stainless steel clamps** EN 1.4307/304 for food use, in different sizes and configurations:



Polished NW – 10 AISI-304
Polished NW – 20 AISI-304
Polished NW – 25 AISI-304
Polished NW – 32 AISI-304
Polished NW – 40 AISI-304
Polished NW – 50 AISI-304

Polished NW – 60 AISI-304
Polished NW – 65 AISI-304
Polished NW – 80 AISI-304
Polished NW – 100 AISI-304
Polished NW – 125 AISI-304
Polished NW – 150 AISI-304

QUALITY AND PROFESSIONALISM

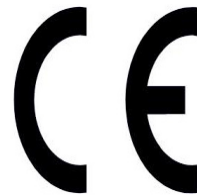
To **offer the best services**, the company has machinery and technology of a wide spectrum.

- Numerical plasma cutting equipment Work table 14500 x 3500 with beveling head.
- Fiber laser cutting of 4000 x 2000.
- Vertical cutting shears of 4 meters of 15 millimeters.
- Cutting shears of 2.5 meters of 8 millimeters.
- 4 meter (260 tons) numerical control folding machine.
- 3 meter (200 tons) numerical control folding machine.
- 2 meter (80 tons) numerical control folding machine.
- Punching machine of 150 tons.
- Die-cutting line to make pieces in series.
- Circular shear to manufacture traffic signs.
- Conformer for the manufacture of traffic signals.
- Laser welding machine (1500 watts).
- 5 meter press with manipulator (300 tons).
- 3 meter press (200 tons).
- Beading machine to manufacture bottoms with a diameter from 1000 to 6000 mm.
- Beading machine to manufacture bottoms with a diameter from 400 to 3000 mm.
- 5 meter welding bench.
- Hydraulic cylinders of 3000 de largo hasta 20 milímetros.
- 5 meter bottom polisher.
- Automatic submerged arc welding column (Brand: lincoln-1000A).
- Set of 10-ton self-centering turners.
- Set of 16-ton self-centering turners.

FOR US THERE ARE NO LIMITS



QA



CERTIFICAT DE QUALITÉ – SIGNALISATION (MCE)

L'entreprise développe ses produits selon le marquage CE, conformément aux exigences légales et techniques de sécurité des États membres de l'Union européenne with approved welders and welding procedures.

CONTACT INFORMATION

DEPOSITOS VILLARROBLEDO, S.L.



Polígono Industrial C/Leonardo da Vinci – Nave 5
02600 VILLARROBLEDO – Albacete – España



+34 967 14 36 92 / +34 628 71 05 32



info@depositosvillarrobledo.com



www.depositosvillarrobledo.com

FOR MORE INFORMATION VISIT OUR WEBSITE

